

Westell Boxer® | A90-BXM2019-4HE3

Weather-tight, secure outdoor cabinets with 34W/°C heat exchanger



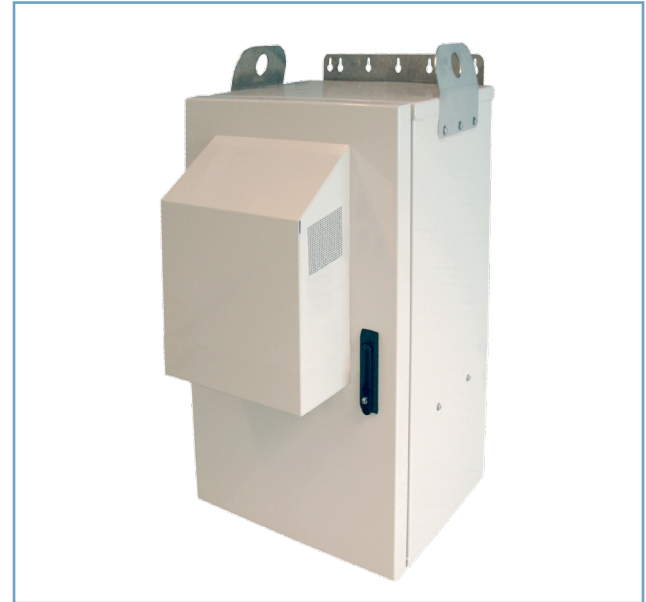
General Information

Westell's Boxer series of outdoor cabinets offer innovative solutions to meet your demand for protection and security of your network equipment. A wide range of sizes and cooling options are available to support your space and cooling requirements. The Boxer outdoor cabinets are third-party tested to Telcordia GR-487 by independent National Recognized Testing Laboratories to ensure outstanding environment protection of your network equipment. The cabinets utilize welded, aluminum, powder coated construction to provide years of trouble free service.

The Westell Boxer 20 provides 19" 20RU of rack space with available battery box, pole and wall mounting options.

Product Highlights

- 20RU 19" rack space
- NEMA 4 and GR-487 compliant
- Actively cooled, temperature-controlled 34W/°C heat exchanger +24V or -48VDC powered
- Air conditioner cooling options available
- Light-weight welded, aluminum, powder-coated construction
- Adjustable internal rack rails
- Compact size (approx. 40"H x 24.5"W x 28"D)
- Full size front access door; 2 point, 7/16" cup screw (216 can wrench) latch with pad-lockable security
- Rear-access panel for easy equipment access and mounting
- Multiple floor knock-outs for a variety of cable sizes
- Convenience GFI box and AC duplex boxes
- Factory alarm wiring:
 - Door alarm
 - Temperature alarm (triggered at 60°C)
- Dual ground posts, and interior & exterior ground lugs
- Removable lift ears
- Removable H-frame/wall mount brackets
- Optional pole mount kit
- Optional battery box
- Optional SideCar
- Optional skirt
- Optional pad mount kit (requires optional battery box or skirt)



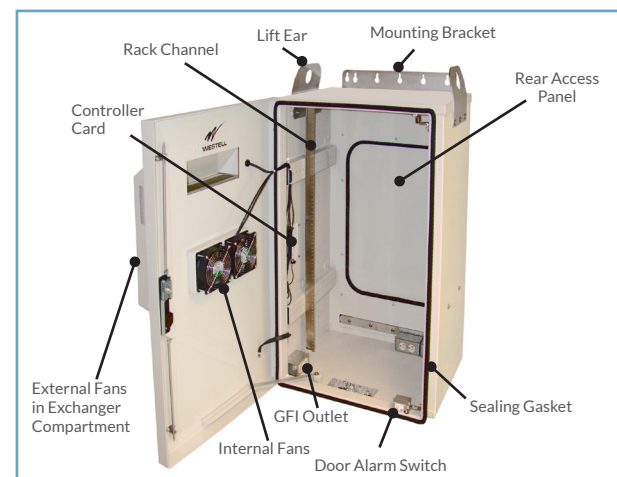
Model Number A90-BXM2019

Applications

- Rural Broadband
- Small Cell
- Metro Ethernet
- Cell Backhaul
- Security

Ordering information

Part Number	Descriptions
A90-BXM2019-4HE3	20-RU Main Boxer cabinet, temperature-controlled, 34W/°C +24V or -48VDC heat exchanger cooling. 19" rack



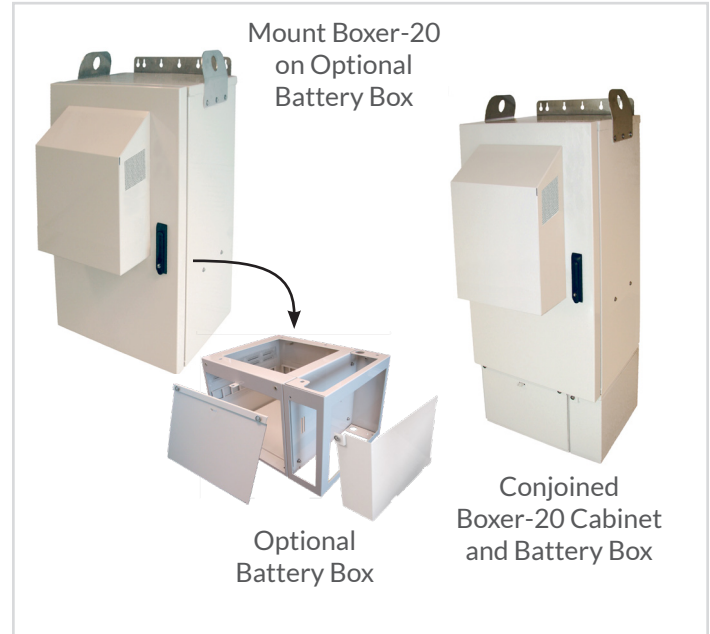
Westell Boxer® | A90-BXM2019-4HE3

Weather-tight, secure outdoor cabinets with 34W/°C heat exchanger



Specifications

Physical Features	US	Metric
Height (incl. all mounting brackets)	46.95 in	119.25 cm
Height (between mounting holes)	43.675 in	110.93 cm
Height (cabinet only, exterior)	40.01 in	101.63 cm
Width (exterior, incl. ears/nuts)	25.12 in	63.80 cm
Width (between inside wall surfaces)	23.75 in	60.325 cm
Depth (door closed, approx.)	27.88 in	70.82 cm
Depth (door open 90°)	43.50 in	110.50 cm
Depth (ext. w/o heat exchanger)	20.60 in	52.32 cm
Depth (internal approx.)	17.50 in	44.45 cm
Weight (empty, approx.)	110 lbs	58.976 kg
Operating Temperature	-40 to 115°F	-40 to 46°C
Interior rack space (numerous front-to-back channel positions)	20 RUs full-front access, plus 2 RUs limited front-access	
Air conditioner cooling options available		



Boxer Battery Boxes and Accessories

Type	Part Number	Description
Accessories	A90-BXB19-A	Battery box
	A90-BXB19-B	Battery box with heater pad
	A90-BXB19-D	Battery box wide for Boxer with Side Car
	A90-BXB19-14	Skirt box for Boxer, 14" high
	A90-BXA-HP01	Battery heater pad
	A90-BXA-PM02	Pole mount kit: main cabinet
	A90-BXA-PM05	Pole mount kit: main cabinet + std & wide battery box
	A90-BXA-WH01	Wall/H-frame mount kit: main cabinet + std & wide battery box
	A90-BXA-19PT1	Pad mount template: std battery box
	A90-BXA-19PT2	Pad mount template: wide battery box
	A90-BXA-CK01	Coupler kit: (2) 1/2", (2) 3/4", (4) 2"

