

Westell Boxer® 30 Twin Outdoor Cabinet Series

Weather-tight, secure double bay outdoor cabinets featuring 60 RU of rack space



General Information

Westell's Boxer Plus series of outdoor cabinets offer innovative solutions to meet demand for the protection and security of network equipment. A wide range of sizes and cooling options are available to support your space and cooling requirements.

Boxer Plus outdoor cabinets are designed to meet Telcordia GR-487 to ensure outstanding environment protection for your network equipment. The cabinets utilize welded aluminum, powder coated construction to provide years of trouble-free service.

The Westell Boxer 30 Twin outdoor cabinet series provides a combined 60 RU with double bay of 19" or 23" rails and included battery box.

Product Highlights

- Combined 60 RU with 19" or 23" rack space
- NEMA 4 rated and designed to meet GR-487
- Accommodates up to two heat exchangers (210W/C) or air conditioners (6.8k BTU)
- Adjustable internal front and rear rack rails support 19" or 23" applications
- Full size front and rear access doors or panels; 3 point with latch with pad-lockable security
- Multiple right and left bottom knock-outs
- Convenience GFCI and duplex convenience outlets
- Factory alarms:
 - Door intrusion
 - Temperature alarm
- Integrated lift hooks (1 per corner)
- Includes solar shield and battery box
- Mounting options: pad

Applications

- Fixed Wireless Broadband
- Rural Broadband
- 5G
- GPON



A90-BXM30TP-2D1H
with 2 doors and 1 heat exchanger

Ordering Information

Part Number	Description
A90-BXM30TP-2D1H	30 RU Boxer Twin cabinet with rear panels and 60 RU of rack space, temperature controlled with 210W/C -48VDC heat exchanger, 19" or 23" adjustable front and rear rails.
A90-BXM30TP-4D2H	30 RU Boxer Twin cabinet with rear doors and 60 RU of rack space, temperature controlled with two 210W/C -48VDC heat exchanger, 19" or 23" adjustable front and rear rails.
A90-BXM30TP-2D1AC	30 RU Boxer Twin cabinet with rear panels and 60 RU of rack space, temperature controlled with 6800 BTU, 2,000W, -48VDC air conditioner, 19" or 23" adjustable front and rear rails.

Accessories

A90-BXA-PT4	Pour in place pad mount template.
-------------	-----------------------------------



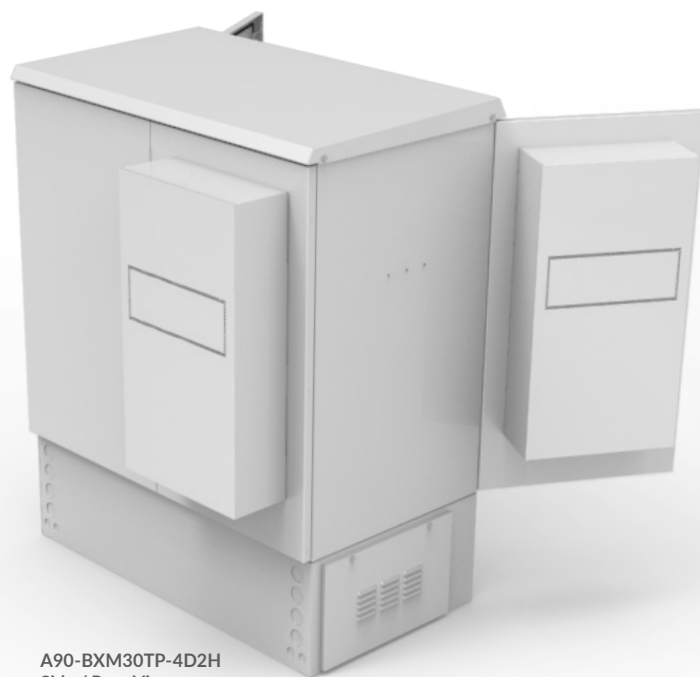
Westell Boxer® 30 Twin Outdoor Cabinet Series

Weather-tight, secure double bay outdoor cabinets featuring 60 RU of rack space



Specifications

	A90-BXM30TP-2D1H	A90-BXM30TP-4D2H	A90-BXM30TP-2D1AC
Height:	77.50 (in) / 196.85 (cm)		
Width:	63.20 (in) / 160.53 (cm)		
Depth: (with HEX or AC unit)	46.90 (in) / 119.13 (cm)	55.95 (in) / 142.11 (cm)	42.51 (in) / 107.98 (cm)
Depth: (door closed, without HEX or AC unit)	37.50 (in) / 95.25 (cm)		
Depth: (both doors open 90° on both sides)	93.50 (in) / 237.49 (cm)		
Weight:	746.00 (lbs) / 338.38 (kg)	849.00 (lbs) / 385.10 (kg)	750.00 (lbs) / 340.20 (kg)



A90-BXM30TP-4D2H
Side / Rear View,
with 4 doors and 2 heat exchangers



A90-BXM30TP-2D1AC
Side / Front View,
with 2 doors and 1 air conditioner

