



Westell® | CoverEdge™ Fiber Panels

General Information

Westell's CoverEdge Fiber Panels versatile and practical design offers user-friendly fiber access and fiber management for routing and deploying fiber feeds, drops, and jumpers. The plug & play as you grow design allows the service provider to add port capacity incrementally with minimal investment, maximizing total cost of ownership.

Panels can accommodate up to 12 High-Density Cassettes, and up to 18 Standard-Density Cassettes in a 19" or 23" rack-mountable 1RU, 2RU, 3RU or 4RU panels.

Product Highlights

- Scalable design with plug & play cassettes from 1 to 18 cassettes
- Standard-Density (SD) and High-Density (HD) Cassette applications with choice of industry-standard connectors
- Panel designed for compliance with Telcordia GR-63, GR-1089, GR-449, GR-20 and GR-409
- Flip-down front and rear cover for easy access and installation of cassettes
- Front and rear access to panel
- Large designation card on top of panel for greater writing space and improved legibility
- Reversible mounting ears for 19" or 23" rack
Note: Mounting ears can also be used to wall mount 1RU and 2RU panels
- Front panel cable guides provide user-friendly fiber management

Applications

- MxU—Multiple units (residential, commercial) housed in building/campus
- Central office/data centers
- Cellular backhaul fiber distribution
- Business-Class Service delivery
- OSP cabinets



EPFP-4000-00: 4RU Fiber Panel



EPFP-SCP: Single Cassette Panel

Ordering Information

EPFP-1000-00	1 RU Panel (for both High-Density and Standard-Density Cassettes)
EPFP-2000-00	2 RU Panel (for both High-Density and Standard-Density Cassettes)
EPFP-3000-00	3 RU Panel (for both High-Density and Standard-Density Cassettes)
EPFP-4000-00	4 RU Panel (for both High-Density and Standard-Density Cassettes)
EPFP-SCP	1 Cassette Panel for both High-Density and Standard-Density Cassettes

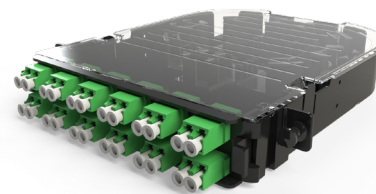


Westell® | CoverEdge™ Fiber Panels

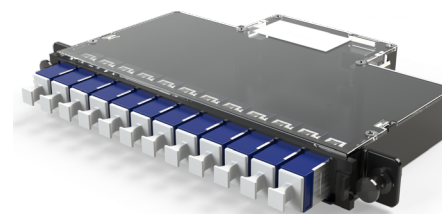


Product Specifications

Dimensions	1RU	1.75"H x 16.8"W x 13.65"D (5.3" forward of mounting ears)
	2RU	3.0"H x 16.8"W x 13.65"D (5.3" forward of mounting ears)
	3RU	5.5"H x 16.8"W x 13.65"D (5.3" forward of mounting ears)
	4RU	7.2"H x 16.8"W x 13.65"D (5.3" forward of mounting ears)
	SCP	1.75"H x 8.25"W x 2.9"D
Cassette & Port Density	1RU	4 SD Cassettes - 48 LC / SC Ports
		2 HD Cassettes - 48 LC / 24 SC Ports
	2RU	8 SD Cassettes - 96 LC / SC Ports
		4 HD Cassettes - 96 LC / 48 SC Ports
	3RU	12 SD Cassettes - 144 LC / SC Ports
		8 HD Cassettes - 192 LC / 96 SC Ports
	4RU	18 SD Cassettes - 216 LC / SC Ports
		12 HD Cassettes - 288 LC / 144 SC Ports
	SCP	1 Cassette 24 LC / 12 SC Ports
Ratings	Designed for compliance with Telcordia GR-63, GR-1089, GR-449, GR-20 and GR-409	
Mounting Options	19" or 23" Rack-mounted or Wall Mountable	
Color: EPFP Panel	Black	
Color: EPFP-SCP Cassette Panel	White	
Material	Aluminum with powder-coated paint	

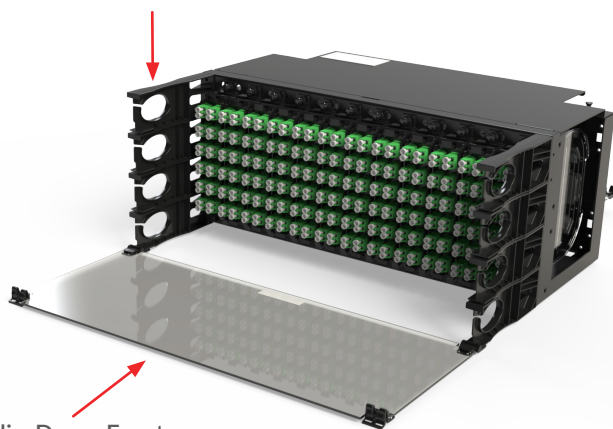


EPHC2- High-Density Cassette



EPSC2- Standard-Density Cassette

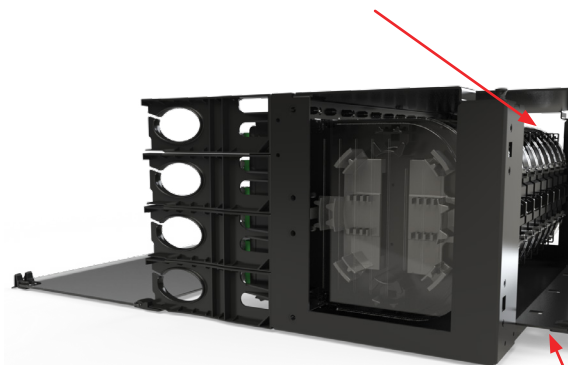
Fiber Management Guides



Flip-Down Front
Access Cover

Fiber Panel (Front View)

Rear Access to Cassette Input Ports



Flip-Down Rear
Access Cover

Fiber Panel (Rear View)

