

Westell® | CoverEdge™

High-Density Indoor / Outdoor Enclosure

General Information

Westell's CoverEdge High-Density Indoor/Outdoor Enclosure offers a versatile and scalable solution to future-proof fiber MxU deployments. This compact, light-weight, and NEMA 4X rated outdoor enclosure can house up to two High-Density Cassettes.

The thermoplastic enclosure delivers fiber from the MxU to the antenna and all points in between. The high-density enclosure employs weather-tight, IP68-rated Break-Thru plugs that accommodate a variety of cable diameters and types of pushable fiber and microduct and offers up to 48 ports of fiber terminations within its small footprint.

Adding to its deployment flexibility, top and bottom mounting ears are provided for ease of installation on a wall or H-Frame and multiple cable entrance connectors at the base of the enclosure.

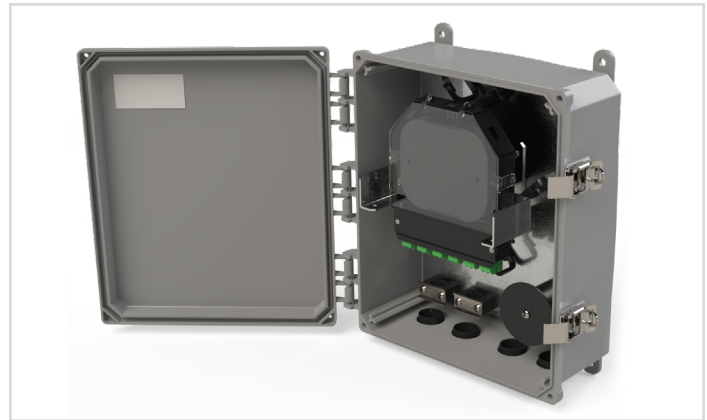
The high-density cassettes can be pre-installed in the panel to serve patch-only and patch & splice applications with choice of industry-standard terminations. The high-density indoor/outdoor enclosure offers a cable stub option using a wide variety of cable types and lengths.

Product Highlights

- Cassette scalability for plug & play deployment
- Bulkhead plate/push-pin design for easy cassette installation and access
- Bend-radius details for fiber management
- Generous slack storage for feed and drop cables
- Segregated feed and drop storage for cable and strength members
- Top/bottom mounting ears accommodate wall or H-frame mounting
- Enclosure designed for compliance with NEMA 4X standards
- Cassette terminations designed and tested to Telcordia GR-326

Applications

- MxU—Multiple units (residential, commercial) housed in building/campus
- Cellular backhaul demarcation and colocation
- Business-Class service delivery
- Separate/secure interconnection or access point



EPHI: High-Density Indoor/Outdoor Enclosure

Product Specifications

| | |
|---------------------------|--|
| Dimensions | Enclosure: 12"H x 10"W x 4"D |
| Port Density | Up to 2 High-Density cassettes, w/24 ports each |
| Connector Types | SC/UPC, SC/APC, LC/UPC, LC/APC and MPO |
| Storage Capacity | Up to 12 meters of buffer tube and 24 meters of jacketed 3mm fiber jumpers |
| Cable Types | 12 or 24-Fiber; Armored, Riser, Plenum, OSP or Indoor/Outdoor |
| Cable Stub Lengths (feet) | 10, 25, 50, 100, 200, 300, 500 and 1,000 |
| Ratings | Designed for compliance with NEMA 4X standards |
| Security | Two-point latch system with lock hasps for padlock or security tag |
| Mounting Options | Top/Bottom mounting ears for wall or H-frame installations |
| Color | Gray |
| Material | Polycarbonate |



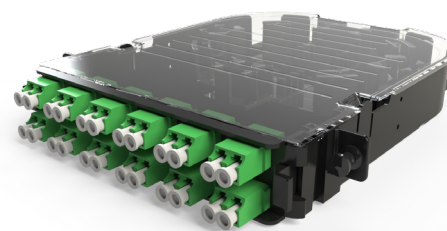
Westell® | CoverEdge™

High-Density Indoor / Outdoor Enclosure



Ordering Information

| Code | No. of HD Cassettes | HD Cassette Type (Input to Output) | Cable Type | Stub Length (ft) |
|-------|------------------------------|------------------------------------|-------------|------------------|
| E PHI | 0 = None | 0 = None | 0 = None | 0 = None |
| | 1 = 1 | 1 = Patch MPO Male to SC/UPC | A = Armored | A = 10 |
| | 2 = 2 | 2 = Patch MPO Male to SC/APC | R = Riser | B = 25 |
| | | 3 = Patch MPO Male to LC/UPC | P = Plenum | C = 50 |
| | | 4 = Patch MPO Male to LC/APC | S = OSP | D = 100 |
| | | 5 = Patch & Splice to SC/UPC | I = In/Out | E = 200 |
| | | 6 = Patch & Splice to SC/APC | | F = 300 |
| | | 7 = Patch & Splice to LC/UPC | | G = 500 |
| | 8 = Patch & Splice to LC/APC | | H = 1,000 | |



24-port LC/APC Patch & Splice High-Density Cassette

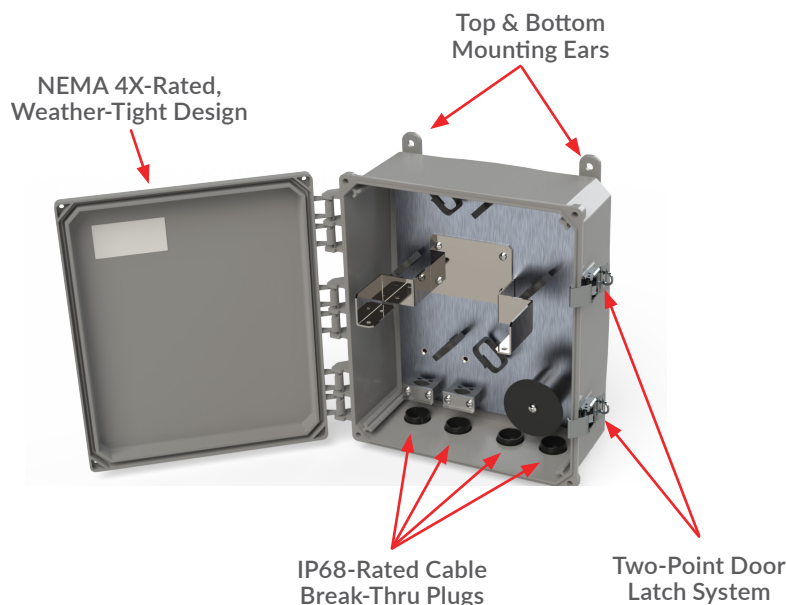
Ordering Example:

E PHI-28PD

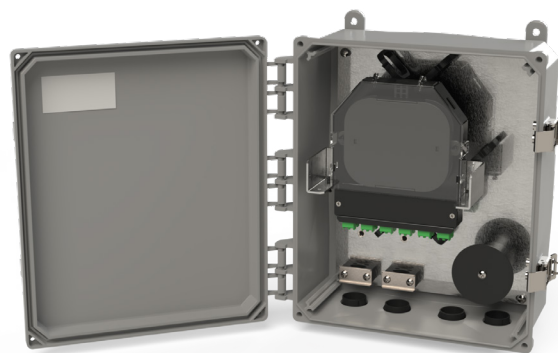
Note: Not all part numbers/configurations work in practice or may not be purchased. Please contact Westell Customer Service for assistance with your requirements.

Accessories:

| Code | Description |
|-----------|----------------|
| E PHI-PMK | Pole Mount Kit |



CoverEdge High-Density Indoor/Outdoor Enclosure - Internal



CoverEdge High-Density Indoor/Outdoor Enclosure - Shown with High-Density Cassette



WESTELL

WESTELL.COM