

Westell® | 806-960 MHz Yagi Antenna

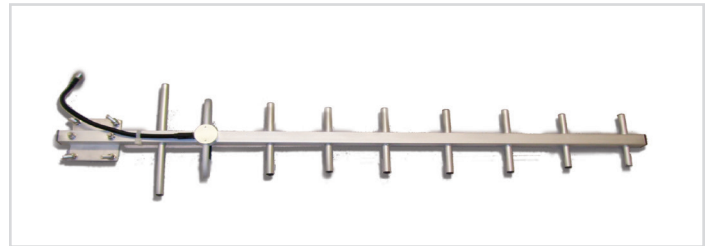


General Information

Westell's 806-960 MHz Yagi Antenna is excellent for Public Safety applications. The nine-element construction provides exceptional performance and durability and is useful for directional point-to-point, or point-to-multipoint applications.

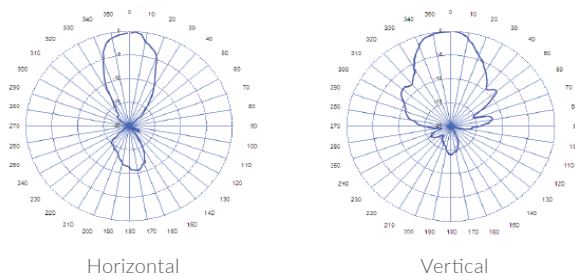
Product Highlights

- 11 dBi gain
- 806-960 frequency range
- 9 elements
- Hermetically sealed driven element
- Rugged anodized aluminum lightweight design
- Stainless-steel mounting hardware



806-960 MHz Yagi Antenna, 11 dBi

Radiation Patterns



Electrical Specifications

Gain	11 dBi
VSWR	<1.5:1
Horizontal beamwidth	45° ± 5°
Vertical beamwidth	40° ± 5°
Polarization	Vertical/horizontal
Maximum input power	100 Watts
Electrical downtilt	0°
Front-back ratio	>15 dB

Specifications subject to change without notice.

Mechanical Specifications

Number of elements	9
Connector	N-Female
Lightning protection	Direct ground
Rated wind speed	134 mph (200 kph)
Frontal wind load	11.2 lbf
Lateral wind load	8.2 lbf
Dimensions	37.5 x 8 x 2.2 in
Antenna weight	1.21 lbs
Mounting hardware	Stainless-steel
Included mounting hardware fits 1.18-2.36 in OD pipe	



WESTELL.COM