

Westell® | 340-420 MHz UHF Yagi Antenna



General Information

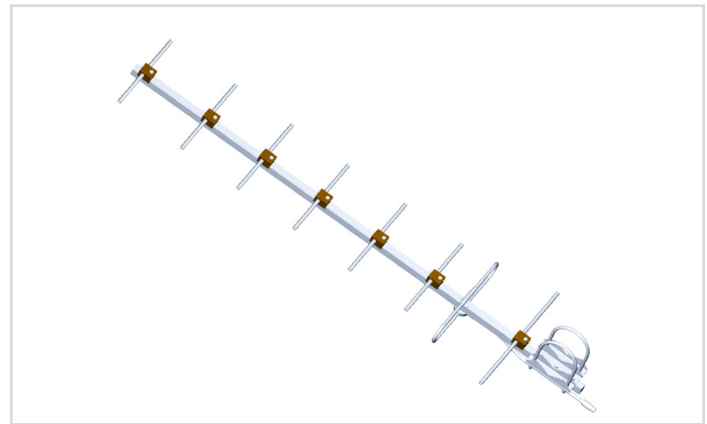
Westell's UHF Yagi Antenna is made for UHF Public Safety applications. Vertical or horizontal polarization as well as 8 element construction provides excellent performance and durability. Perfect for directional, point-to-point, or point-to-multipoint applications.

Product Highlights

- Low profile with rugged construction
- Horizontal or vertical polarization
- High gain for excellent point to point
- DC short lightning protection

Applications

- UHF Public Safety
- Directional, point to point or multi-point



340-420 MHz UHF Yagi Antenna

Electrical Specifications

Frequency range (MHz)	340-420
Gain (dBi)	11 ≤ 2dBi
VSWR	<1.5:1
Polarization	Vertical/horizontal
Horizontal beam width	50 ± 5deg
Vertical beam width	85 ± 5deg
Impedance (Ω)	50
Maximum input power (W)	250
Front-back ratio	≥16dB

Specifications subject to change without notice.

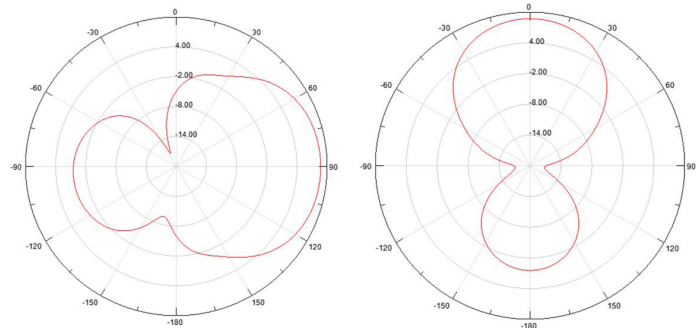
Mechanical Specifications

Cable	Plenum
Connector	N (f)
Lightning protection	Direct ground
Mount for mast dia.	1.2" to 2/4"
Dimensions	61" L x 16.5" W x 3.15" H
Antenna weight	8.36lbs
Operating temperature	-40° to +70° C
Max wind velocity	~124.5 Mph
Included mounting hardware fits 1.96"-4.13" inch OD pipe	

Ordering information

Part Number	Descriptions
CS03-023-839	Ant-DY-380G11/N(f)

340MHz Horizontal and Vertical Radio Pattern



WESTELL

WESTELL.COM