

Westell® | 698-806/806-960 MHz Panel Antenna

General Information

Westell's high gain, high isolation, and narrow beam panel antenna is ideal for both public safety and commercial cellular applications where a high degree of control over the donor signal is required.

Product Highlights

- Ideal for high gain outdoor site applications
- Narrow beamwidth
- High front to back ratio

Applications

- As a donor antenna for Public Safety BDAs requiring high gain and high isolation
- Supports 698-806/806-960 MHz, which includes 700 LTE, FirstNet, 700 PS, 800 PS, and 850 MHz
- Public Safety, 3G, 4G, and 5G DAS systems
- Ideal for ERCES projects that require high isolation and out of band interference prevention

Electrical Specifications

Frequency Band (MHz)	698-806	806-960
Polarization (°)	Vertical	
Gain (dBi)	≥ 15	≥ 16
Downtilt (°)	0 to 25	
Horizontal Power Beamwidth (°)	29 ± 3	26 ± 3
Vertical Power Beamwidth (°)	29 ± 3	26 ± 3
Front-to-Back Ratio (dB)	≥ 30	
Impedance (Ω)	50	
VSWR	≤ 1.5	
Intermodulation IM3 (2 × 43 dBm)	≤ -153 dBc	
Maximum Input Power (W)	100	
Lightning / Ground Protection	DC Ground	

Environmental Specifications

Operating Temperature °C	-40 ~ +60
Windload, Survival Rating mph	Windload 150
Effective Projected Area (EPA)	6.33 ft²



Model CS03-717-999

Ordering Information

Part Number	Description
CS03-717-999	Panel Antenna 698-806/806-960 MHz 29/26° 15/16dBi

Mechanical Specifications

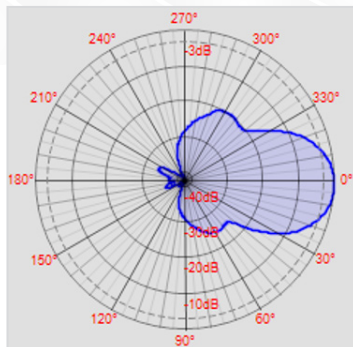
Connector:	
Connector Type	N(F)
Connector Position	Bottom
Antenna:	
Antenna Dimensions: Height/Width/Depth in - [mm]	27.56 x 27.56 x 5.28 [700 x 700 x 134]
Antenna Weight lb - [kg]	32.63 [14.8]
Radome Material	Fiberglass
Radome Color (RAL)	White
Mounting Bracket:	
Diameter of Installation Pole in - [mm]	1.97~4.53 [50~115]
Mechanical Adjustable Tilt Range [°]	0~25
Bracket / Mount Weight lb - [kg]	9.92 [4.5]
Installation Kit Material	Integrated steel bracket with tilt
Packaging:	
Packing Dimensions: Length, Width, Depth in - [mm]	36.22 x 30.71 x 10.63 [920 x 780 x 270]
Shipping Weight lb - [kg]	49 [22.3]

All specifications subject to change without notice.

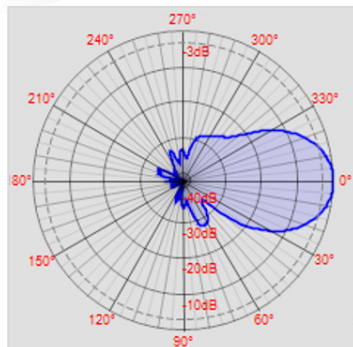


Westell® | 698-806/806-960 MHz Panel Antenna

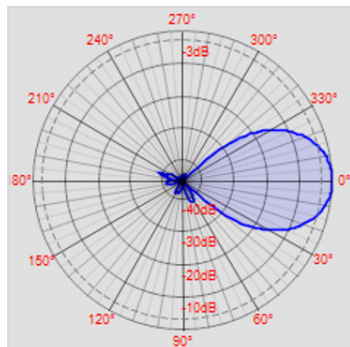
Typical Antenna Patterns



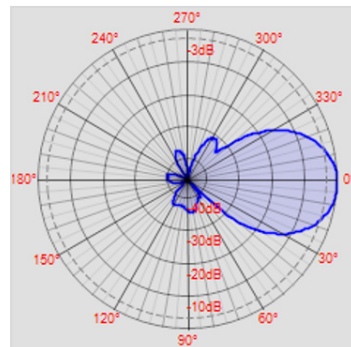
Vertical 698-806 MHz



Horizontal 698-806 MHz

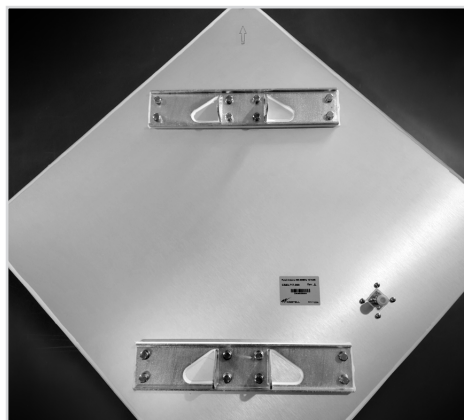


Vertical 806-960 MHz

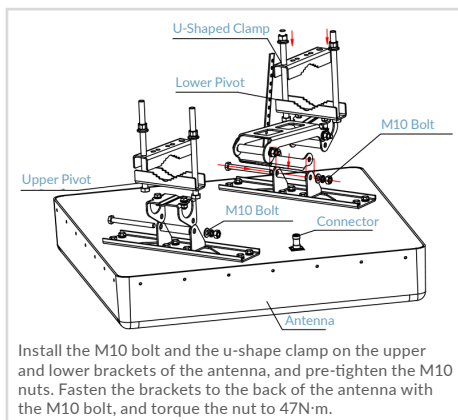


Horizontal 806-960 MHz

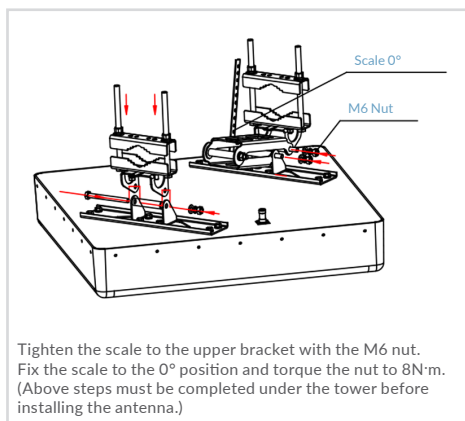
Installation and Mounting Drawings



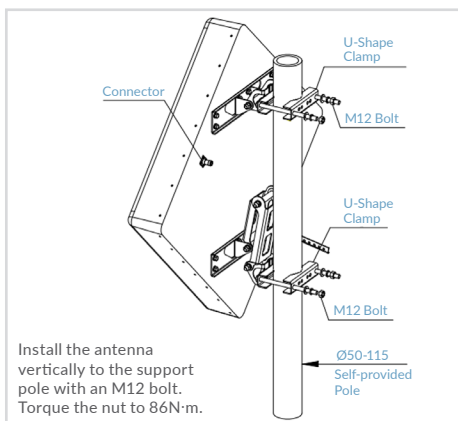
Rear of Antenna



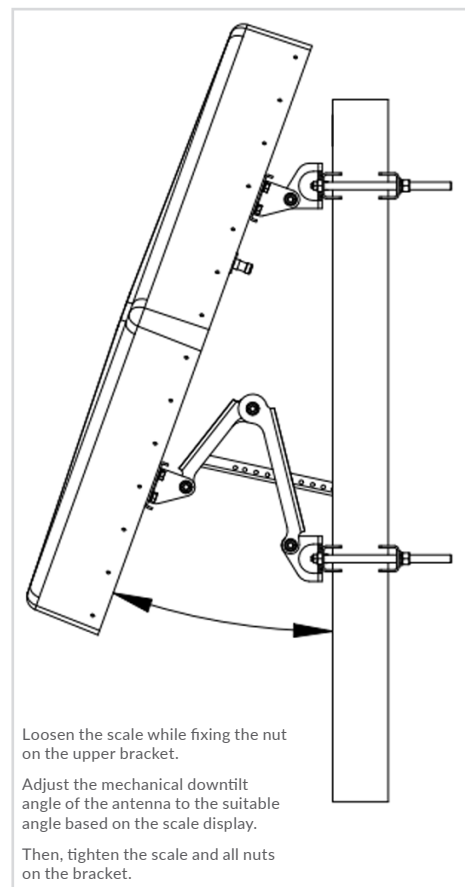
Step 1



Step 2



Step 3



Step 4

