



Westell® | Cross Band Coupler

General Description

Westell Cross Band Couplers provide for the combining of multiple frequency bands on shared cables and multi-band antennas or the splitting of 2 frequency bands to inject into a DAS head-end.

Product Highlights

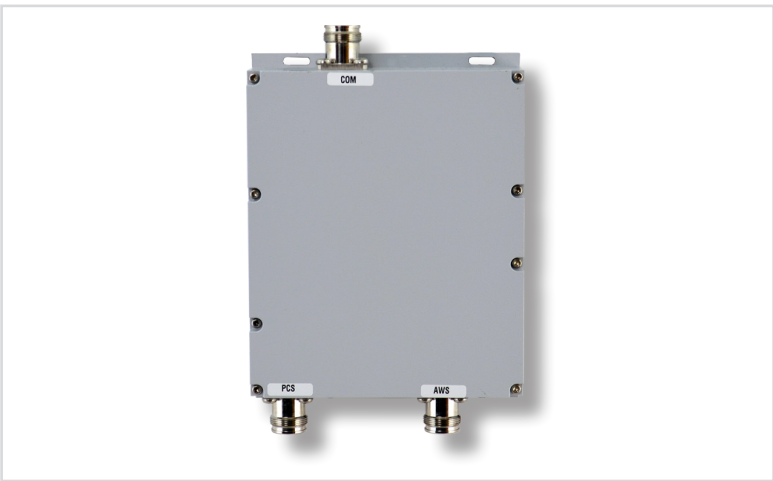
- VSWR $\leq 1.44:1$
- IP67 and RoHS Compliant
- Power Rating 80 Watts Max.
- Includes AWS +3 Block

Frequency Range

- Port 1: 1695-1780/2110-2180 AWS+3
- Port 2: 1850-1990 PCS

Electrical Specifications

	Output 1		Output 2
Frequency Range (MHz)	1695-1780	2110-2180	1850-1990
Insertion Max Across Band	<0.3 dB		<0.3 dB
Ripple @ BW	<0.3 dB		<0.3 dB
Return Loss	>15 dB		
VSWR	$\leq 1.44:1$		
Attenuation (Rejection) Frequencies (MHz)	>30 dB 1850-1990		>30 dB 1695-1780 2110-2180
Isolation	≥ 30 dB		
PIM	-153 dBc @ 2x23 dBm N type -161 dBc @ 2x43 dBm 4.3-10 type		
Input Power	80W Max.		
Impedance	50 Ohm		



CS06-023-422-02 - Single Cross Band Coupler Pictured

Ordering Information

Part Number	Description
CS06-023-422-02	CBC-PCS/AWS/-161dBc 4.3-10 type connector

Mechanical Specifications

Case Material	Aluminum/Silver Plated
Connectors	N(f)/4.3-10(f)
Color	Gray
Weight	3.3 lbs
Dimensions (WxHxD)	6.46"x5.44"x1.71" (excludes mounting hardware)
Operating temperature	-20° C to +50° C
Enclosure Rating	IP67 and RoHS Compliant

*Includes pole mount hardware



Westell® | Cross Band Coupler



Mechanical Drawing

