

Westell® | Triplexer (Multiplexer)

Add CBRS/C-Band Carrier to Low/Mid Band In-Building Wireless Infrastructure



General Information

Westell's triplexers are designed to support carrier aggregation for licensed bands. DAS, C-RAN, D-RAN, and O-RAN deployments will require low PIM and high isolation to combine or split cellular bands like CBRS and C-Band to minimize band interference.

Product Highlights

- Low PIM (-161 dBc)
- >50 dB Port Isolation
- Low Insertion Loss

Frequency Ranges

- Port 1: 617-960 MHz
- Port 2: 1695-2690 MHz
- Port 3: 3400-4200 MHz

Applications

- DAS Deployments
- C-RAN Deployments
- D-RAN Deployments
- O-RAN Deployments

Specifications

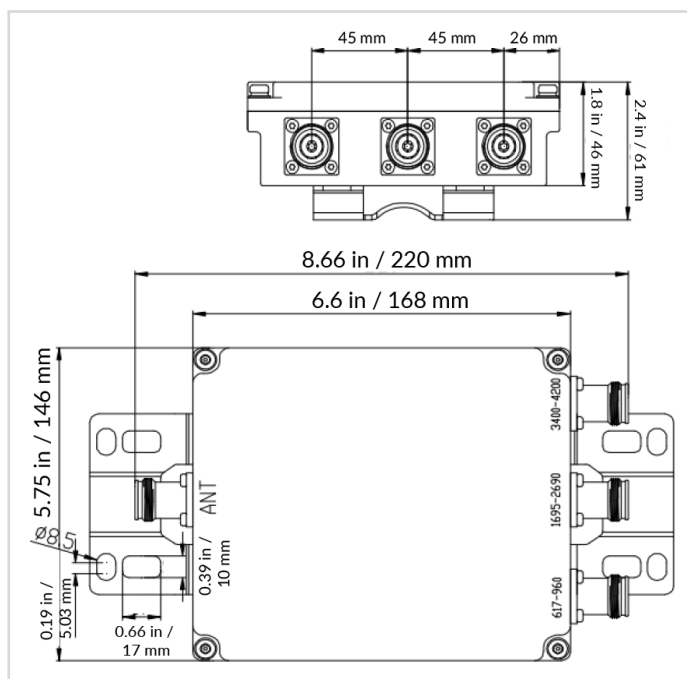
Item:	Port 1	Port 2	Port 3
Frequency Range	617 ~ 960 MHz	1695 ~ 2690 MHz	3400 ~ 4200 MHz
Insertion Loss	≤ 0.40		
Return Loss	≥ 18 dB (1.30)		
Isolation	≥ 50 dB		
Impedance	50Ω		
Intermod Distortion	≥ -161dBc @ 2x43dBm (≥ -165dBc @ 2x43dBm Typ)		
Power	250W (Avg.)		
Connector Type	4.3/10 Female		
DC/AISG	By-Pass (Max. 3000 mA)		
Lightning Protection	10KA; 10/350us Pulse		
Dimensions (HxWxD)	8.66" x 5.75" x 1.8", Excluding Mounting Bracket		
Colors	Gray		
Environment Class	IP67		
Operational Humidity	5% - 95%		
Operating Temperature	-4°F ~ +149°F / -20°C ~ +65°C		
Mounting	Bracket Included, Stainless Steel Adjustable Clamp		



CS06-617-38C Triplexer

Ordering information

Part Number	Description
CS06-617-38C	Triplexer, 700/800, AWS, PCS, B41, CBRS, C-Band



WESTELL