

# Model 510 / 610 Series

In-Building Amplifier



## General Information

The model 510 and 610 series of in-building amplifiers provide amplification of both uplink and downlink for Public Safety frequencies in facilities located within reasonable proximity of cell towers and where coverage is otherwise non-existent.

### Product Highlights

- Alphanumeric user interface
- Integrated digital power/AGC meter allows for precise set up without test equipment
- Oscillation detection and suppression control feature to prevent network interference
- Local alarm contact closure points and interface for remote shutdown

### Frequency Ranges

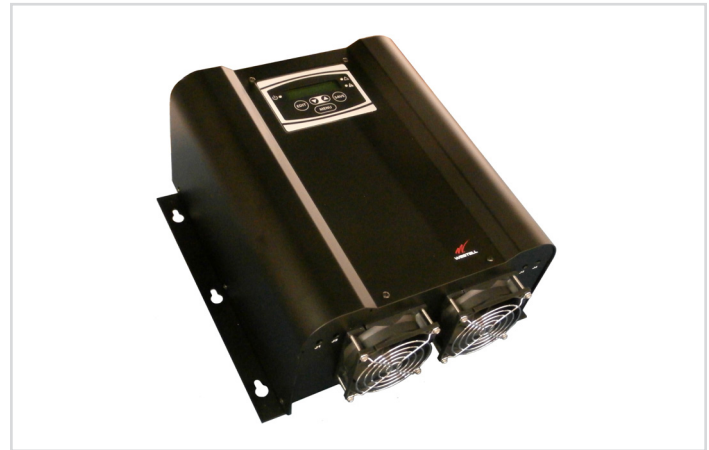
- BDA51062-S8: UL 806-824 & DL 851-869 MHz
- BDA61080-S8: UL 806-824 & DL 851-869 MHz
- BDA61080-S9: UL 896-901 & DL 935-940 MHz

### Applications

- Parking garages
- Warehouses
- Basements
- Shielded structures
- Metal buildings
- Office complexes
- Campus environments
- Hospitals and convention centers

### Mechanical Specifications

Single band	
Dimensions (HxWxD) in.	12.38 x 12.6 x 6.21
Weight (lbs nominal)	15.5
Connectors	N-Female
Operating Temperature	-22° to +118° (F)



BDA61080 - Pictured

### Ordering Information

Part Number	Description
CS01-221-007	BDA51062-S8 1:1; SMR 800 MHz; 65 dB gain; ½ watt
CS01-223-007	BDA61080-S8 1:1; SMR 800 MHz; 80 dB gain, 1 watt
CS01-223-008	BDA61080-S9 1:1; SMR 900 MHz; 80 dB gain, 1 watt

### Electrical Specifications

	51062	61080
Linear Output Power (typical)		
SMR 800	27 dBm	29 dBm
SMR 900	-	29 dBm
Noise Figure (typical)	5.5 dB	5.5 dB
AGC Dynamic Range	25 dB	25 dB
Propagation Delay	<250 nsec	<250 nsec
Maximum Input Power	+10 dBm	+10 dBm
Gain Adjustment Range	0-30 dB, 1dB Steps	0-30 dB, 1dB Steps
Power Requirements	120 VAC @ 1.3 A	120 VAC @ 1.3 A



WESTELL

WESTELL.COM